

Largest producer of perforated materials

Tradition

Quality

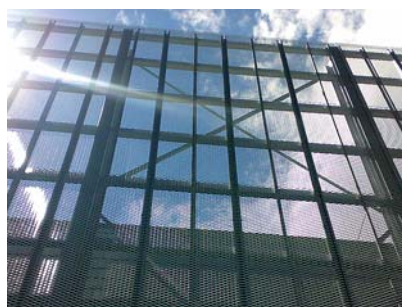
Logistic

Guarantee

> Perforated sheets



> Expanded metal



> Steel gratings Footsteps



> Meshes



> Conveyor belts and others



Modern
architecture

Facades

Sieves

Fences

Bridges

Platforms

Stairs

Antinoise
screens

ZOO

Transport

Air-conditioning

Mine

Driers

Mills

Shelves

Brewery

Barriers

Sugar

Security fences

Bakery

Dairy



Transport and delivery service in 24 hours in the Czech Republic

> Perforated sheets

Sheet format: max 1500 x 3000 mm
 Coils: width 1000 mm, 1250 mm, 1500 mm
 Mild steel thickness: max 12 mm
 Stainless steel thickness: max 8 mm
 Perforation type:

- Round
- Square
- Slot
- Special
- Embossed
- Decorative, ...

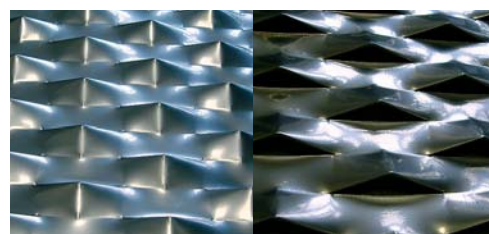


Stock items 600 kinds. Tailor made production.

> Expanded metal

Sheet format: max 1500 x 3000 mm
 Coils: width 1000 mm, 1250 mm, 1500 mm
 Mild steel thickness: max 6 mm
 Mesh type:

- Rhombic
- Square
- Round
- Hexagonal
- Decorative, ...



Stock items 100 kinds. Tailor made production.

> Steel gratings Footsteps

Grating type:

- Pressed
- Welded
- Made from expanded metal
- Made from stainless steel

 Even electrochemical finish

Material: Mild steel / hot dip galvanized / stainless steel

Mesh type:

- Square
- Rectangle



Stock items 40 kinds. Tailor made production.

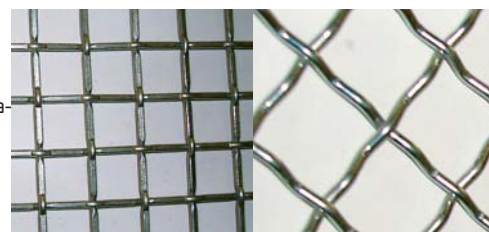
> Meshes

Mesh type:

- Ribbed
- Pressed
- Welded mesh

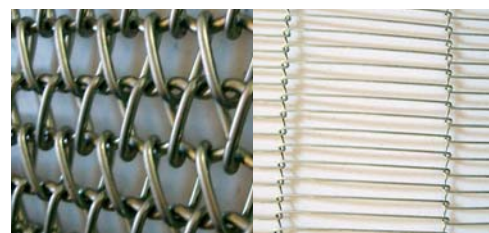
Material: Mild steel / hot dip galvanized / stainless steel wire

Tailor made production.



> Conveyor belts and others

Usage: temperatures -50 °C to 1200 °C
 Heavy operations, acid-proof, moisture-proof
 Material: Mild steel / hot dip galvanized / stainless steel wire
 Tailor made production.



PERFO LINEA a. s.
 K Májovu 1262, 537 01 Chrudim
 GPS: 49°57'23.274"N, 15°48'15.933"E

Tel: +420 469 603 111, Fax: +420 469 603 110
 E-mail: perfolinea@perfolinea.cz, Skype: perfolinea

PERFO LINEA a. s.
 Šlikova 9, 796 01 Prostějov
 GPS: 49°28'16.181"N, 17°6'13.989"E

Tel: +420 582 401 127, Fax: +420 582 401 106

